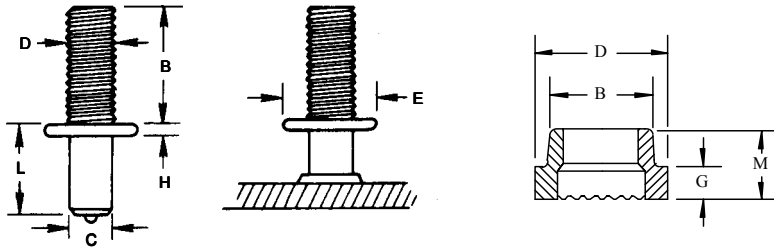




# COLLAR STUDS



**COLLAR STUDS** are used to provide a spacer between the parent metal and the part secured on threaded extension.

**HOW TO ORDER**  
Specify base diameter, before weld (BW) length to the top of the collar, thread size and length, type of material.

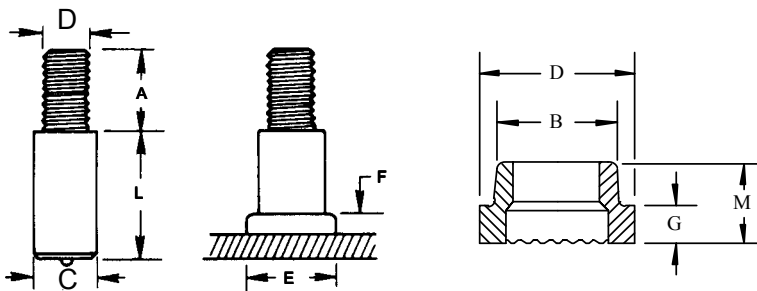
**EXAMPLE**  
.330 x 1-1/2" (BW) with a 3/8 -16 x 3/4" thread extension, collar stud (CK), mild steel.

| STUD SPECIFICATIONS |        |         |      |     |      | FERRULE SPECIFICATIONS |       |       |      |      |
|---------------------|--------|---------|------|-----|------|------------------------|-------|-------|------|------|
| D                   | Std. B | Min. L. | C    | E   | H    | No.                    | D     | B     | G    | M    |
| 1/4 - 20            | 5/8    | 3/8     | .214 | 1/2 | 3/32 | FK-025                 | .875  | .785  | .145 | .255 |
| 5/16 - 18           | 5/8    | 3/8     | .273 | 5/8 | 3/32 | FK-031                 | .875  | .785  | .145 | .255 |
| 3/8 - 16            | 5/8    | 3/8     | .331 | 5/8 | 3/32 | FK-037                 | .875  | .785  | .145 | .255 |
| 1/2 - 13            | 3/4    | 1/2     | .446 | 3/4 | 3/32 | FK-050                 | 1.200 | 1.040 | .135 | .290 |

**MATERIAL:** Low carbon steel ASTM A 108 1010-1020. Stainless steel 18-8



# SHOULDER STUDS



**SHOULDER STUDS** are used to provide a spacer between the parent material and the finished part.

**HOW TO ORDER**  
Specify base diameter, before weld (BW) length of the base, thread size and length, type of material.

**EXAMPLE**  
1/2" base diameter, 1-1/8" before weld (BW) length, with a 3/8-16" x 3/4" thread extension (SB), stainless steel.

| STUD SPECIFICATIONS |      |         |       |      | FERRULE SPECIFICATIONS |       |      |      |      |
|---------------------|------|---------|-------|------|------------------------|-------|------|------|------|
| D                   | C    | Min. L. | E     | F    | No.                    | D     | B    | G    | M    |
| 1/4 - 20            | 3/8  | 3/8     | 1/2   | 1/8  | FF-037                 | .640  | .505 | .234 | .390 |
| 5/16 - 18           | 7/16 | 3/8     | 19/32 | 9/64 | FF-043                 | .703  | .585 | .234 | .422 |
| 3/8 - 16            | 1/2  | 3/8     | 11/16 | 5/32 | FF-050                 | .795  | .650 | .250 | .438 |
| 1/2 - 13            | 5/8  | 1/2     | 7/8   | 3/16 | FF-062                 | 1.030 | .785 | .328 | .516 |

**MATERIAL:** Low carbon steel ASTM A 108 1010-1020. Stainless steel 18-8

