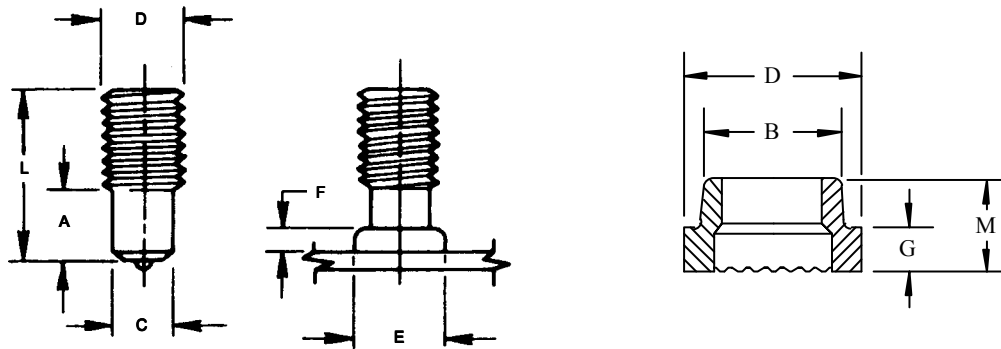




REDUCED BASE STUD



STUD SPECIFICATIONS						FERRULE SPECIFICATIONS					
D	Min. L.	C	A	FILLET DIMENSIONS		No.	D	B	G	M	A
				E	F						
1/4 - 20	3/4	.187	.187	17/64	1/8	FB-025	.455	.380	.240	.380	.260
5/16 - 18	3/4	.272	.187	5/16	1/8	FB-031	.578	.445	.315	.455	.322
3/8 - 16	3/4	.312	.375	27/64	1/8	FM-037	.590	.505	.125	.250	.420
1/2 - 13	1	.437	.437	9/16	5/32	FM-050	.740	.650	.125	.281	.555
5/8 - 11	1 1/4	.500	.547	39/64	11/64	FM-062	.875	.785	.174	.300	.620
3/4 - 10	1 1/2	.620	.797	49/64	9/32	FM-075	1.030	.945	.235	.405	.765
7/8 - 9	1 1/2	.745	.922	15/16	21/64	FF-075	1.235	1.030	.469	.656	.935
1 - 8	1 3/4	.875	1.078	11/16	11/32	FF-087	1.430	1.210	.520	.715	1.060

REDUCED BASE STUDS are designed for small clearance holes and where close run-down of nuts are essential.

MATERIAL: Low carbon steel ASTM A 108 1010-1020. Stainless steel 18-8

* Specified reduced base dimensions are industry standards.

Alternate reduced base dimensions can be manufactured to specifications.

HOW TO ORDER

Specify diameter, thread size, before weld (BW) length, type of material.

EXAMPLE

3/8-16 x 1" (BW) Reduce Base (RB), mild steel.

HOW TO DETERMINE BEFORE WELD (BW) LENGTH

First establish the standing length of the stud after weld (AW).

Based on the diameter of the stud include the following additional length before weld (BW).

Diameters up through 9/16" add 1/8"

Diameters from 5/8" through 7/8" add 3/16"

Diameters 1" through 1-1/4" add 1/4"

