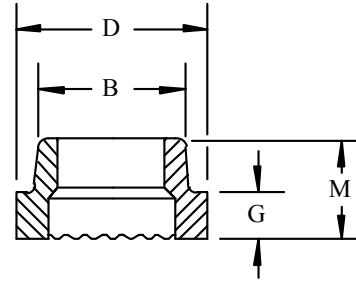
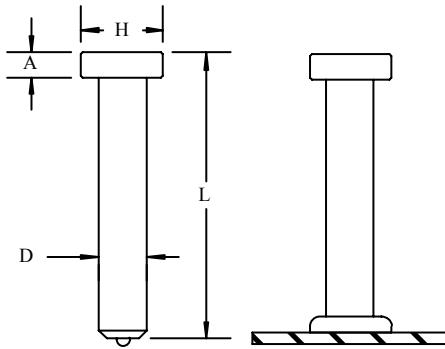




SHEAR CONNECTOR



For welding to fillet or heel of angle consult a Stud Welding Associates representative for ferrule part number.

1" DIAMETER SHEAR CONNECTORS								
Stud Specifications			Ferrule Specifications					
D	H	A	Type	No.	D	B	G	M
1	15/8	1/2	Flat Surface	FF-100	1.620	1.416	.633	.835
Standard Length"	Part Number	Weight (lbs.) Per 1000	Pieces Per Standard Box					
4 1/4	SC1000425	1133	75					
5 1/4	SC1000525	1383	60					
6 1/4	SC1000625	1600	60					
8 1/4	SC1000825	2050	40					
9 1/4	SC1000925	2225	40					
10 1/4	SC1001025	2475	35					

Mechanical Property Requirements

	Type A ¹	Type B ²
Tensile strength	61,000 psi min (420 MPa)	65,000 psi min (450 MPa)
Yield strength (0.2% offset)	49,000 psi min (340 MPa)	51,000 psi min (350 MPa)
Elongation (% in 2 in.)	17% min	20% min
(% in 5x dia.)	14% min	15% min
Reduction of area	50% min	50% min

1 Type A studs shall be general purpose of any type and size used for purposes other than shear transfer in composite beam design and construction.

2 Type B studs shall be studs that are headed, bent, or of other configuration in 1/2 in. (12.7 mm), 5/8 in. (15.9 mm), 3/4 in. (19 mm), 7/8 in. (22.2 mm) and 1 in. (25.4 mm) diameter that are used as an essential component in composite beam design and construction.

All Stud Welding Associates Shear Connector Studs meet AWS specifications D1.1. International specifications BS5950, BS5400, DIN/ISO also available. Test reports available on request.

SHEAR CONNECTOR STUDS are designed to effectively tie the concrete to the steel beams and to resist shear loadings between the concrete slab and steel beam in composite construction.

FERRULES: All orders for studs include required ferrules.

LENGTH: Length is before weld. Stud will be approximately 1/4" shorter after welding. Lengths for shear connector studs are generally set by governing specifications. Consult your SWA representative for other lengths available for specific applications. **Made to order lengths available upon request.**

MATERIAL: Low carbon steel ASTM 108, 1010-1020.

STAINLESS STEELS: SC studs are also available in stainless steel.



EASTERN SALES SERVICES, INC. | 2500 MILFORD SQUARE PIKE, QUAKERTOWN, PA 18951
215.529.5439 toll free: 888.276.7045 | www.easternsalesinc.com | sales@easternsalesinc.com