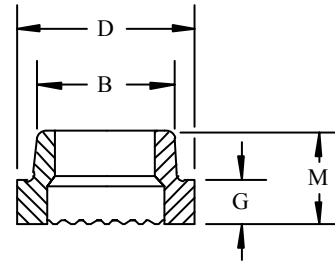
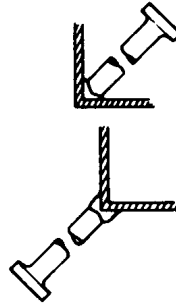
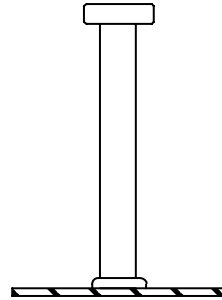
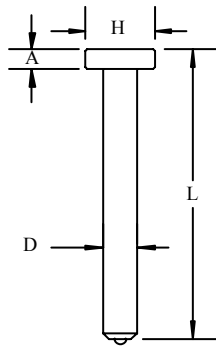




HEADED ANCHOR



For welding to fillet or heel of angle consult a Stud Welding Associates representative for ferrule part number.

STUD SPECIFICATIONS

FERRULE SPECIFICATIONS

D	H	A	No.	D	B	G	M
1/4	.500	.187	FF-025	.454	.380	.234	.390
3/8	.750	.281	FF-037	.640	.505	.234	.390
1/2	1.000	.281	FF-050	.795	.650	.250	.438
5/8	1.250	.312	FF-062	1.030	.785	.328	.516

Description D" L"	Part Number	Weight (lbs.) Per 1000	Pieces Per Standard Box
1/4 x 1 1/8	HA0250112	24	2000
1/4 x 2 11/16	HA0250268	43	1000
1/4 x 4 1/8	HA0250412	65	1000
3/8 x 1 3/8	HA0370137	69	1000
3/8 x 1 5/8	HA0370162	75	500
3/8 x 2 1/8	HA0370212	93	500
3/8 x 2 5/8	HA0370262	108	500
3/8 x 3 1/8	HA0370312	126	500
3/8 x 4 1/8	HA0370412	155	250
3/8 x 6 1/8	HA0370612	218	250

Description D" L"	Weight (lbs.) Per 1000	Part Number	Pieces Per Standard Box
1/2 x 1 1/8	114	HA0500112	500
1/2 x 1 5/8	130	HA0500162	500
1/2 x 2 1/8	170	HA0500212	250
1/2 x 2 5/8	197	HA0500262	250
1/2 x 3 1/8	226	HA0500312	250
1/2 x 3 5/8	259	HA0500362	250
1/2 x 4 1/8	292	HA0500412	250
1/2 x 5 5/16	341	HA0500531	200
1/2 x 6 1/8	393	HA0500612	150
1/2 x 8 1/8	504	HA0500812	100
1/2 x 10 1/8	680	HA05001012	75
5/8 x 1 7/16	208	HA0620143	250
5/8 x 2 11/16	315	HA0620268	200
5/8 x 3 3/16	360	HA0620318	200
5/8 x 4 3/16	450	HA0620418	100
5/8 x 5 3/16	560	HA0620518	100
5/8 x 6 9/16	652	HA0620656	100
5/8 x 8 3/16	793	HA0620818	75
5/8 x 10 3/16	1036	HA06201018	75

All Stud Welding Associates Headed Anchor Studs meet AWS specifications D1.1. International specifications BS5950, BS5400, DIN/ISO also available. Test reports available on request.

HEADED ANCHOR STUDS are used in all types of concrete connections. They can be welded to a flat surface, or in the fillet, or on the heel of an angle.

FERRULES: All orders for studs include required ferrules.

LENGTH: Length is before weld. Stud diameters (D) 1/2" and below will be approximately 1/8" shorter after welding. 5/8" will be approximately 3/16" shorter after welding.

Made to order lengths available upon request.

MATERIAL: Low carbon steel. ASTM A108, 1010-1020

HA studs are also available in stainless steel.

- Type A studs shall be general purpose of any type and size used for purposes other than shear transfer in composite beam design and construction.
- Type B studs shall be studs that are headed, bent, or of other configuration in 1/2 in. (12.7 mm), 5/8 in. (15.9 mm), 3/4 in. (19 mm), 7/8 in. (22.2 mm) and 1 in. (25.4 mm) diameter that are used as an essential component in composite beam design and construction.

Mechanical Property Requirements

	Type A ¹	Type B ²
Tensile strength	61,000 psi min (420 MPa)	65,000 psi min (450 MPa)
Yield strength (0.2% offset)	49,000 psi min (340 MPa)	51,000 psi min (350 MPa)
Elongation (% in 2 in.)	17% min	20% min
(% in 5x dia.)	14% min	15% min
Reduction of area	50% min	50% min

